

Support Programme

2021-2022



Support Programme

At The Phoenix Private School, we are passionate about ensuring that each and every student reaches their full potential. The Support Programme was established in September 2014, as the school strived to cater for students of different abilities among our vast student population.

What is the support programme (SP)?

The Support Programme (SP) is an intervention programme which is designed for students who are:

- Working below the National Curriculum average and require academic support in and out of the classroom.
- Gifted in one or more academic subjects and need to be challenged to excel to new heights.

The programme mainly concentrates on raising attainment in the core subjects of English and Maths. At PPS, we have found that some of our EAL (English as an Additional Language) students have a language barrier that affects their learning across different curriculum areas. The SP will help improve the language skills necessary to enable students to access the full curriculum.

What the SP programme offers

IN The Classroom

The SP guarantees support in the classroom for:

- Two Maths **or** two English lessons (SPL1),
- Two Maths **and** two English lessons (SPL2),

by dedicated and highly motivated Learning Support Teachers (LSTs).

These teachers provide the students with targeted lesson objectives, narrowing down the main lesson objectives to manageable aims within the lesson. They also provide greater challenges and offer further opportunities to the gifted students to develop these gifts.

This will allow the students to have continuous assistance during their lessons, helping them not only with the lesson objectives in question but also general study skills and techniques, for example note-taking and visualization, as the ultimate goal is to create independent learners.

Outside the classroom

The Support Programme also includes EAL sessions, which involves targeted learning outside of the classroom. These sessions will focus on the students' individual needs, for example in spelling, comprehension or grammar and they can take place during non-core sessions, such as Topic, Modern Foreign languages, Music or Art for Extra targeted English lessons.

After school hours

Additionally, all SP students will be offered after school-hours support with homework, in the SP After School Club.

Individual Learning Plan (ILP)

Students on the SP are given an Individual Learning Plan (ILPs) with achievable short term targets and a clear step by step guide for the student and teacher to follow.

The ILPs are based on the assessment data analysis report provided by the GL assessments. GL assessments are external assessments that identify gaps in learning, learning difficulties or advanced skills. The analysis reports provide detailed feedback on different areas of learning and suggested strategies to be followed, identify the gaps in learning and highlight any learning difficulties or advanced skills.

To learn more about GL assessment, you can visit this site:

<https://www.gl-assessment.co.uk/>

The ILPs will be revised twice termly, which will allow the Classroom Teacher, SP coordinator and the Learning Support Teacher (LST) to work together with the student and the parents in following up the student's learning with a continuous review of their progress.

The SP is a targeted intervention programme with measurable goals, and successful students will be recommended to come off the programme and join a fully mainstream education. There are termly reviews which will be shared with the student and the parent and all decisions will be made in cooperation with all parties.

Who to contact

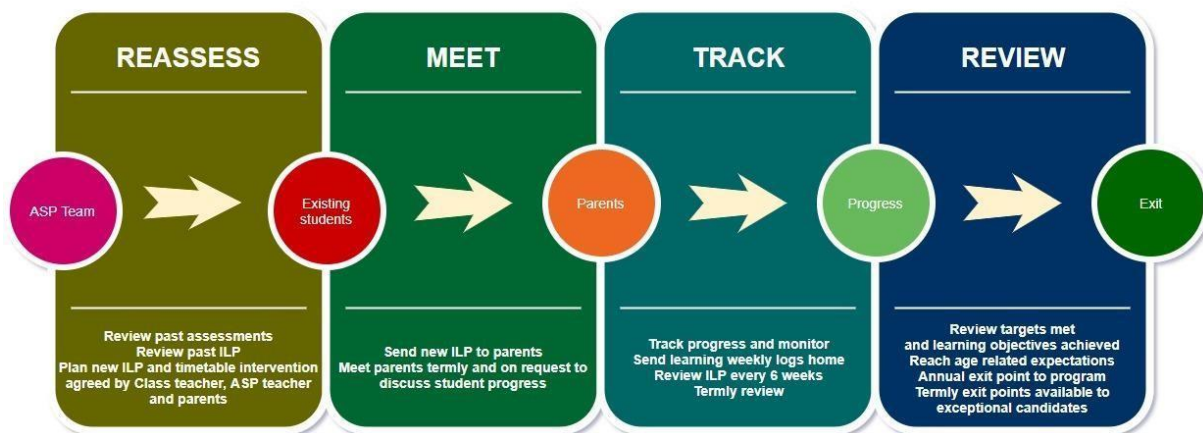
For more details regarding the support programme, please email asmaa.elnaggar@pps.sch.qa

Kind regards,

Asmaa El Naggar
SP Coordinator



How the ASP programme works for existing students



How the ASP programme works for new students

